

# Torii & Water: A Gateway to Shinto

Monument List

**Hannah Imson, Amy Kahng, Tory  
Lekson**

# Shinto Purification



- Purification by water is symbolic of pacification and inner purification of the spirit

Image - Picken 54

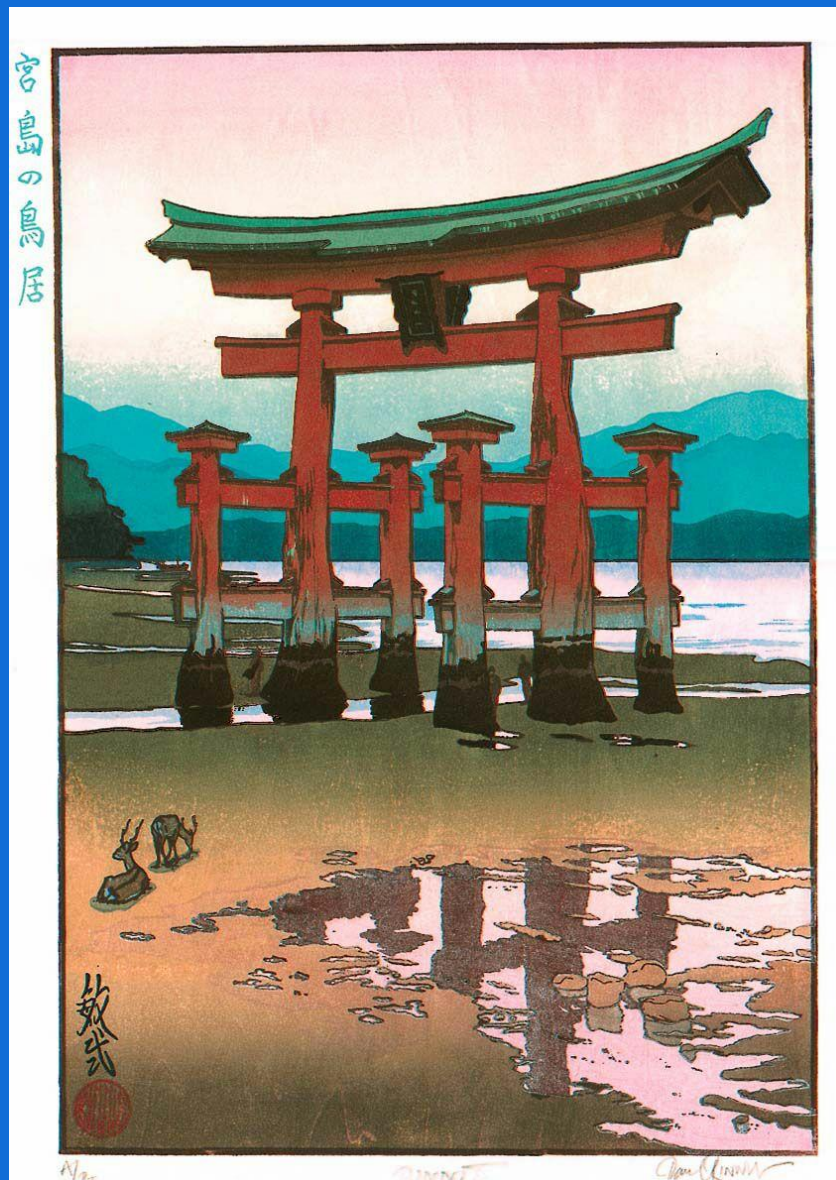
# Land Purification by Water - Meiji Shrine







*Torii Gate at Itsukushima, 16th Century. Wood, concrete, copper. Itsukushima Shrine in Miyajima, Japan.*



Paul Binnie, *Miyajima no Torii*, 2003. Woodblock print, 42 x 29 cm. Ukiyoe-Gallery, Japan.





Itagawa Hiroshige, *Torii Gate of Atsuta Shrine at Miya Station*, 1830. Woodblock print. Kyoto, Japan.





1. Hokusai, *Bay of Noboto in Shimosa Province*, 1830.  
Woodblock print, 14 x 9 in. Fuji Arts, Ann Arbor, MI.



1. Kaneko Keizō, *Torii at Mt. Fuji*, 1980. Print color photograph, 10 x 18 inches.  
Lake Fuji, Japan.





*Meoto Iwa*, 1910. Stone, cord, wood, concrete, 3.6 x 9 meters. Futami Okitama Jinja, off the shore of Futami, Mie, Japan.



*Torii Gate at Brooklyn Botanic Garden, 1915. Wood, bronze. Japanese Hill-and-Pond Garden, Brooklyn Botanic Garden, New York.*





*Torii Gate at Oarai Ibaraki, 1000 CE. Stone, cement. Oarai Ibaraki Shrine, off the shore of Oarai Ibaraki.*



*Torii Gate by Miyagawa River. Wood, metal, cement. by the Miyagawa River, Takayama, Japan.*





Utagawa Toyoharu, *Itsukushima Shrine*, 1760. Woodblock Print, 25.4 x 37 cm.  
Museum of Fine Arts, Boston.



*Torii Gate by Campbell River, 1993. Wood, metal, cement. By the Campbell River at Sequoia Park British Columbia, Canada.*



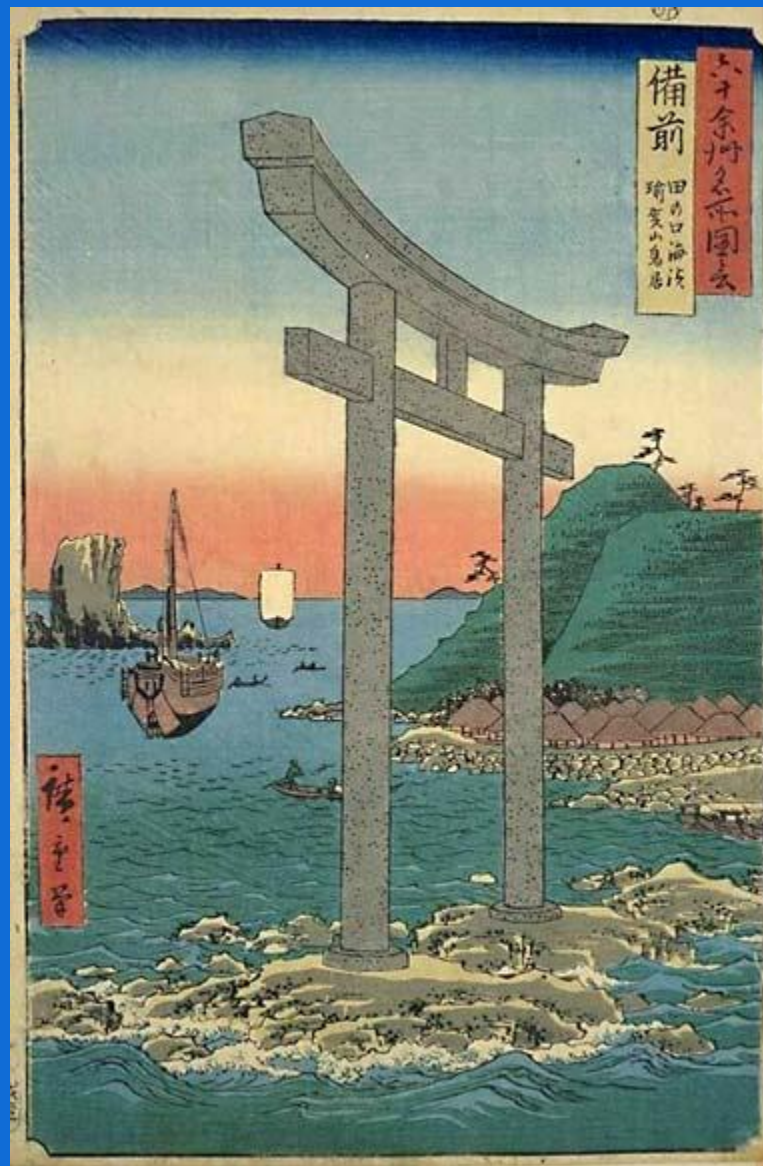


*Torii Gate at Shirahige Jinja Shrine, 1937. Wood, bronze, cement, 7.8 x 12 meters. Shirahige Jinja Shrine, Lake Biwa.*



*Torii Gate at Watazumi Shrine, 1950. Wood, cement. Watazumi Shrine, Tsushima Island.*





Utagawa Hiroshige, *No. 5 Bizen Province*, 1853-1856. Woodblock Print. Fuji Arts, Ann Arbor, MI.



Kasawe Hasui, *Snow at Miyajima*, 1929. Woodblock Print, 9x14 in. Fuji Arts, Ann Arbor, MI.





Utagawa Hiroshige, *Jinbutsu Tokaido & Takaido Harimaze-zue*, 1760.  
Woodblock print, Bank of Tokyo-Mitsubishi, Akatsuka, Japan