

10-30-2020

Learning in a Pandemic Workshop, Part I

Sonya Sharififard
Pepperdine University

Melissa Gavilanes
Pepperdine University

Kimberly Kerr
Pepperdine University

Gabriella Miramontes
Pepperdine University

Follow this and additional works at: <https://digitalcommons.pepperdine.edu/gsepedu>

Recommended Citation

Sharififard, Sonya; Gavilanes, Melissa; Kerr, Kimberly; and Miramontes, Gabriella, "Learning in a Pandemic Workshop, Part I" (2020). Pepperdine University, *Education Division Scholarship*. Paper 129.
<https://digitalcommons.pepperdine.edu/gsepedu/129>

This Article is brought to you for free and open access by the Graduate School of Education and Psychology at Pepperdine Digital Commons. It has been accepted for inclusion in Education Division Scholarship by an authorized administrator of Pepperdine Digital Commons. For more information, please contact bailey.berry@pepperdine.edu.

Scholarship without Borders

Learning in a Pandemic

Part I of II

Pepperdine University

Graduate School of Education and
Psychology



Advancing Critical Thinking

Take a moment to think back to your classes this past week and consider the following:



AT WHAT MOMENT IN CLASS THIS WEEK DID YOU FEEL MOST ENGAGED WITH WHAT WAS HAPPENING?



AT WHAT MOMENT IN CLASS THIS WEEK WERE YOU MOST DISTANCED FROM WHAT WAS HAPPENING?



WHAT ACTION THAT ANYONE (TEACHER OR STUDENT) TOOK THIS WEEK DID YOU FIND MOST AFFIRMING OR HELPFUL?



WHAT ACTION THAT ANYONE TOOK THIS WEEK DID YOU FIND MOST PUZZLING OR CONFUSING?



WHAT ABOUT THE CLASS THIS WEEK SURPRISED YOU THE MOST?



Choose One

- To develop the next great invention
- The ability to detect any emerging or future challenges

Developing your role as a leader

What opportunities are emerging?

- What opportunities are there for me to engage people and learn and grow from the experiences of others?
- For whom can I **POUR** support, who are also working on the same emerging topics of interest: *Providing, Offering, Uplifting, Rebuilding*

What types of support do I need? How am I asking for support?

How am I achieving and sustaining goals?

- Which are short-term, which are long-term, and how does my action plan for each differ?
- Am I aware of the policies, procedures and mechanisms that drive my organization?
Who are the constituents, stakeholders, and external community members involved?

Dissertations

[Exploring the relationship between creativity training and the practice of pause for leaders in a world of information overload,](#)

Dr. Steven Ralph

[Disrupted leadership: Strategies and practices of leaders in a VUCA world,](#)

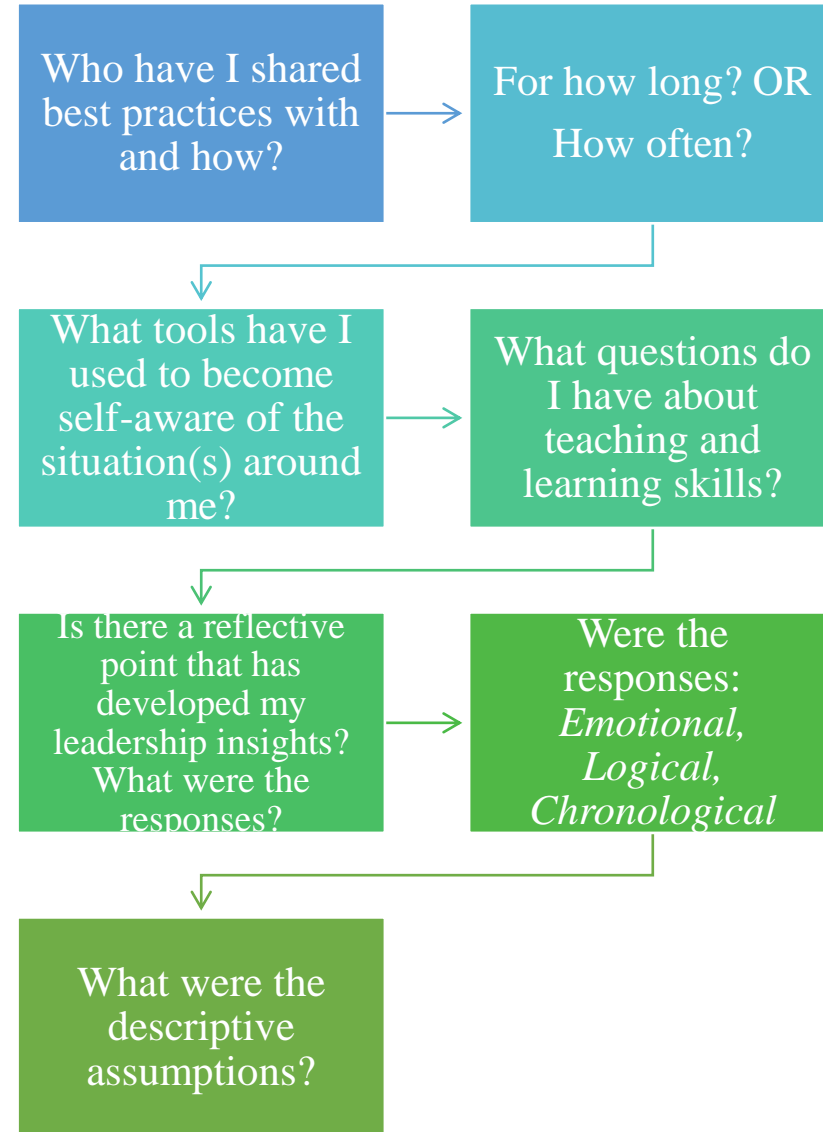
Dr. Victoria Brodie



3 R's

Reciprocate, Reframe, Renew

Empowering others





Reciprocate, Reframe, Renew

1. **Being intentional**
2. What does communication in a virtual learning environment mean to you?
3. How do you begin the conversation?
 - a. Visual cues
 - b. Symbolic storytelling
 - c. Examples of case studies
 - d. Chronology of events
4. Whose testimony are you seeking?
5. Are your best practices a form of continuous trust and learning?
6. **Digital Preservation and Scholarship**
 - a. Digital Commons and the Open Science Framework
 - b. Preservation of talent**
 - a. What is original, what needs to be replicated, what requires ongoing dialog?
 - b. Intellectual humility
 - c. Significance, Relevance
 - d. Clarity and point of view



Upcoming events

Learning in a Pandemic, Part II

Friday, November 6th at 2:00pm PT

Food Insecurity on College Campuses Panel

Saturday, November 21st at 1:00pm PT

Scholarship without Borders Journal

CFP: November 2020

Virtual Office Hours

Thursday, November 5th

Contact



Faculty Advisor

Dr. Gabriella Miramontes, Gabriella.Miramontes@pepperdine.edu

Research and Support Team

Melissa Gavilanes, Melissa.Gavilanes@pepperdine.edu

Kimberly Kerr, Kimberly.Kerr@pepperdine.edu

Dr. Sonya Sharififard, Sonya.Sharififard@pepperdine.edu