

2023

80th Annual Pepperdine Bible Lectureship--Harbor: God Loves Forever (2023)

Mike Cope
Pepperdine University

Follow this and additional works at: <https://digitalcommons.pepperdine.edu/churches>



Part of the [Biblical Studies Commons](#), and the [Christianity Commons](#)

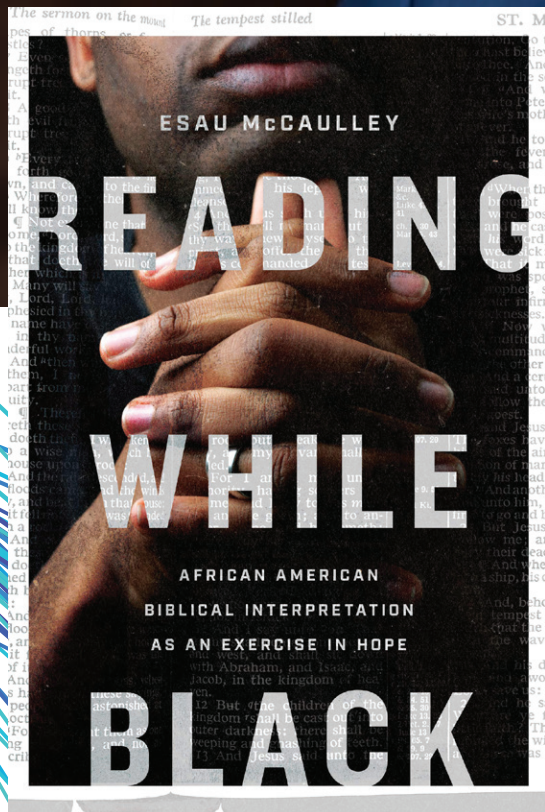
Recommended Citation

Cope, Mike, "80th Annual Pepperdine Bible Lectureship--Harbor: God Loves Forever (2023)" (2023).
Pepperdine Bible Lectures: Programs.
<https://digitalcommons.pepperdine.edu/churches/88>

This Book is brought to you for free and open access by the Religion at Pepperdine Digital Commons. It has been accepted for inclusion in Pepperdine Bible Lectures: Programs by an authorized administrator of Pepperdine Digital Commons. For more information, please contact bailey.berry@pepperdine.edu.



Featured Speaker



Esau McCaulley

Esau McCaulley is an associate professor of New Testament at Wheaton College. His 2020 book, *Reading While Black: African American Biblical Interpretation as an Exercise in Hope*, has won numerous awards, including *Christianity Today's* Book of the Year. His most recent work is a children's book entitled *Josey Johnson's Hair and the Holy Spirit*. McCaulley is a contributing opinion writer for the *New York Times* and his work has also appeared in the *Atlantic*, the *Washington Post*, and *Christianity Today*.

Wednesday-Thursday, 9 AM

Welcome from Jim Gash



If you walk down the street and ask people, everyone will have a definition for “love.” It is perhaps the most basic and universally known idea and experience in history. It translates across culture, language, and time. In stark contrast, however, if you ask people to define God’s love, it becomes nearly impossible. The answers are left wanting as we try to grasp something so immense, so beyond our instincts, and so superior to our finite minds.

The concept is so vast that in Ephesians 3, Paul prays that we might have a divine revelation of the magnitude of God’s love:

“I pray that you, being rooted and established in love, may have power, together with all the Lord’s people, to grasp how wide and long and high and deep is the love of Christ, and to know this love that surpasses knowledge . . .”

This is the epistle that opens with “in love he predestined us” and ends with “love with faith from God the Father and the Lord Jesus Christ.” Paul returns time and time again to the vastness of the love of God: a love from which nothing can separate us (Romans 8:39), a love shown keenly in Jesus (Romans 5:8), a love poured into our hearts by the Holy Spirit (Romans 5:5).

As my dear friend Bob Goff—one of our featured speakers this year at Harbor—has written: “God’s love for us doesn’t change on our worst days. Come to think of it, we can’t earn more of God’s love on our best days. We are simply loved by God, no matter what, and because of Jesus, God doesn’t define us by our mistakes.”

That’s the eternal, immeasurable, indescribable, and incomprehensible love of God that we are going to dive into at Harbor this year. Joline and I would like to invite you to be with us at Pepperdine in May as we explore the theme “God Loves Forever.” What a special theme for our 80th annual lectures!

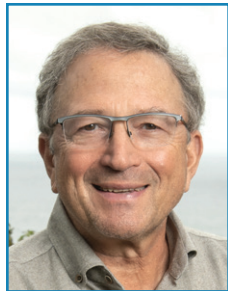
Please join us in Malibu May 2–5, friends, as we find renewal and refreshment in the forever love of God!

A handwritten signature in white ink that reads "Jim Gash".

Jim Gash
President and CEO



Message from Mike Cope



IT'S BEEN 80 YEARS! EIGHTY YEARS SINCE PEPPERDINE COLLEGE HELD ITS FIRST LECTURESHIP FOR MEMBERS OF CHURCHES OF CHRIST, WITH C. R. NICHOL GIVING THE KEYNOTE ADDRESS.

So many things have changed since that World War II-era launch. Churches of Christ and other groups have experienced so many changes—as have our country and our world. “Time is filled with swift transition,” the old hymn reminded.

But the forever love of God hasn’t changed. It continues to fill us, transform us, and send us out into the world God loves.

In 1980, Tom Olbricht, who would become Pepperdine’s chair of the Religion and Philosophy Division and was a beloved leader of this heritage, released a small book that still resonates with depth and insight: *He Loves Forever*. He followed the thread of God’s love throughout the Old Testament, showing how it was the unifying focus. (Tom later wrote a companion book tracing the theme into the New Testament: *His Love Compels*.)

For this special 80th anniversary, we are borrowing that theme: “God Loves Forever.” Could anything be more important for the church now as it seeks to recapture its true identity in a changing world than to know that we are the beloved of God? As Psalm 136 repeats line-after-line: “his love endures forever.”

Please join us May 2–5 as we together contemplate the overwhelming love of God—surrounded by the beauty of mountains and ocean and by the warmth of Christian friends.

Michael W. Cope

Michael W. Cope

Director of Ministry Outreach

OFFICE OF CHURCH RELATIONS
church.relations@pepperdine.edu
310.506.4270



@harborpl
#harbor2023

2023 Keynote Speakers



Wade Hodges

Lucas, Texas

Tuesday, 7 PM



Orpheus Heyward

Atlanta, Georgia

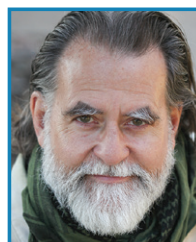
Thursday, 11 AM



Falon Barton

Malibu, California

Wednesday, 11 AM



Richard Beck

Abilene, Texas

Thursday, 7 PM



Jonathan Storment

Little Rock, Arkansas

Wednesday, 7 PM



Joshua Graves

Nolesville, Tennessee

Friday, 11 AM

“When we learn to read the story of Jesus and see it as the story of the love of God, doing for us what we could not do for ourselves—that insight produces, again and again, a sense of astonished gratitude which is very near the heart of authentic Christian experience.”

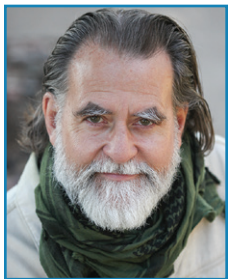
— N. T. WRIGHT

Danny and Carole Phillips Distinguished Speakers



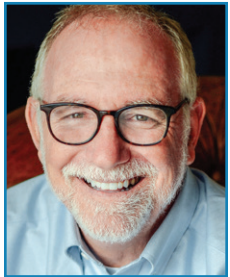
Benefactors **Danny and Carole Phillips** have blessed Harbor with a generous endowment gift that permits us to bring in special speakers to the Pepperdine lectures. Danny is a former Pepperdine regent, and Carole serves as a member of the board of trustees at Abilene Christian University.

In addition to Esau McCaulley (featured on the inside cover), we welcome the following Christian leaders in the Danny and Carole Phillips Distinguished Speaker Series.



Richard Beck

An author and professor of psychology at Abilene Christian University, Beck's popular books include *Hunting Magic Eels: Recovering an Enchanted Faith in a Skeptical Age* and *Trains, Jesus, and Murder: The Gospel According to Johnny Cash*. Beck also serves as an elder at the Highland Church of Christ in Abilene, Texas, and on Monday evenings, he leads a Bible study for 50 inmates at the maximum-security French Robertson Unit.



Bob Goff

Bob Goff is an attorney who founded Love Does, a nonprofit human rights organization operating in India, Iraq, Nepal, Somalia, and Uganda. He is a sought-after speaker for leadership, church, and university events, inspiring current and future influencers to get to the "do part of life." Goff has pioneered the vision of Love Does to fight for freedom and human rights, working to improve educational opportunities and to be helpful to those in need of a voice and a friend. He has served as an adjunct professor at the Pepperdine Caruso School of Law, and is the author of the *New York Times* best-selling *Love Does*.



Suzanne Stabile

Known for her engaging laugh and personal vulnerability, Stabile is a popular speaker and teacher. As an internationally recognized Enneagram master, Stabile has conducted more than 500 Enneagram workshops over the past 25 years. In addition to speaking at hundreds of churches across America and at conferences offered by the Center for Action and Contemplation (CAC), she has partnered with CAC's Richard Rohr, teaching at his center and with him at an international event in Assisi, Italy, on the Enneagram and paradox.



Our newest Helen Young scholars

PEPPERDINE LEGACY PARTNERS

Join **Pepperdine Legacy Partners (PLP)** in its mission to financially and spiritually support students from Churches of Christ, equip them for faithful service, and encourage meaningful engagement in church throughout their lives. Visit us at pepperdine.edu/plp.



2022-2023 Scholars Brunch

Pepperdine Legacy Partners Dinner

Enjoy your dinner with us and celebrate the work of Pepperdine Legacy Partners. Meet some of our scholars, and learn about the scholarship application process for incoming students from one of our admission counselors.

THURSDAY, 5 PM
Hahn Fireside Room

Evening Dessert and Coffee

Wrap up each evening with lively conversation and delicious desserts. All proceeds support the Helen Young Scholarship Fund.

TUESDAY-THURSDAY, 8 PM
Waves Cafe



Become a member
give.pepperdine.edu/plp/membership



Make a gift
give.pepperdine.edu/plp



Join us at our 2023 Harbor events



BOONE
CENTER
for the FAMILY

Are you a leader who wants to help your community build stronger, healthier relationships?

Leaders of young adults, check out the **Relationship IQ Curriculum** to guide people through friendships, dating, boundaries, sex, communication and conflict, technology, and relationship with God.

Use the **RelateStrong Curriculum** to help couples and individuals address conflict in relationships, discover personality differences, and learn how to take off their old selves and put on their new selves in Christ.

Learn more about our trainings and resources:
boonecenter.pepperdine.edu/programs

Wednesday Workshops ■ 2-4:15 PM



Ecclesiastes: Good News for Skeptics

CHRIS HEARD

What do you do when a critical re-examination of your received faith leads you down twisting paths and through dark valleys? When God seems absent or at best inscrutable, and your experience confounds all of your expectations, is there any real alternative to just giving up? Questions like these were just as pressing in antiquity as they feel nowadays. One Judean sage, writing under the name Qohelet, addressed these questions in the remarkable book that today we call Ecclesiastes. In this workshop, we'll trace Qohelet's intellectual, emotional, and spiritual journey, and learn from his example how we might navigate similar challenges today.



Guiding Children to Find Their Connection in God's Ultimate Story

MARIAN AND TIM PARKER

Created from longing itself, humans are born with a longing to connect. Children are naturally open to a connection to our Creator. Coupling this curiosity to an exploration of the Word through the many facets of who we have been created to be allows for deeper understanding of our place—our connection.

We will consider the idea of taking God's stories and learning through a rotation of understandings or methods—science, art, games, drama, history, and how we can serve others. Taking a deep dive into the richness of God's gifts of learning methods, children can begin to discover their place in God's story. Come explore with us and discover your place in God's ultimate story.



God Is: Expanding Our Images of God and Self

MALLORY WYCKOFF

What we believe to be true about God informs what we believe to be true about everything and everyone else. When God is conceived solely through masculine language, metaphors, and imagery—whether in sermons, religious art, or in private prayer—we are robbed of countless ways to experience the Divine, to consider ourselves as humans, to order our communities in ways where everyone has the ability to flourish. In this workshop, we'll inventory our functioning image(s) of God, explore feminine imagery and metaphors, and seek to live into a fuller expression of the Divine—and of ourselves.



Hyphens Between Heaven and Earth: Faith Formation Through Poetry and the Arts

JOI CARR, STEVEN MOORE, AND DARRYL TIPPENS

Why is so much of the Bible expressed in poetry? Why is rhythmic and figurative language found everywhere in Scripture? When our hearts are elated or broken, why do we turn to lyric and song to express the inexpressible? In the words of Abraham Heschel words are “hyphens between heaven and earth.” Through dialogue and performances by contemporary poets and writers, participants will experience the passionate, dramatic story of a living faith.



Memories: Photographs and Stories from the Restoration Movement

**JOHN MARK HICKS, LIPSCOMB UNIVERSITY
MAC ICE, ABILENE CHRISTIAN UNIVERSITY
JERRY RUSHFORD, PEPPERDINE UNIVERSITY**

Photographs are windows into our stories. Join us for an interactive conversation about historic photographs from the Restoration Movement and the stories to which they bear witness. The timeline for the photographs begins in the middle of the 19th century and concludes in the present day.



Thursday Workshops • 2-4:15 PM



Hope and Help for Anxiety

SHARON HARGRAVE AND DEE DEE MAYER

Many of us worry from time to time, but those who suffer from anxiety often experience fear that limits daily life and activities and makes it hard to find joy. Anxiety also impacts our ability to relate to one another in healthy ways. Over the last decade, mental health issues have been on the rise, with anxiety and depression taking the lead. The National Institute for Mental Health reports that 31 percent of adults in America experience an anxiety disorder at some point in their life. These numbers are not different for people in the church. In fact, research shows that approximately one in five people sitting in congregation each week are struggling with a diagnosable anxiety disorder, and pastors are not immune to this statistic.

Join Sharon Hargrave and Dee Dee Mayer as they share new resources created through the RelateStrong Leadership Series to support people seeking to constructively address anxiety personally or in those they lead and serve. Whether a lay leader or a minister, this session is for you.



In the Midst of Good News: A Workshop on the Gospel of Mark

NICK ZOLA

The Gospel of Mark is likely the earliest surviving written story of Jesus. It's fast paced and action packed, revealing some rough language yet real literary artistry, with an abrupt start and a surprising twist at the end. In this workshop we will explore the good news Mark conveys to his listeners and how to relate that good news ourselves, if we dare.



New Music Malibu: Songs for Worship

SHANE COFFMAN AND RANDY GILL

God created music with the power to inspire and encourage us in a unique way. Certainly, some of the songs we have known for years hold a special place in our hearts and still move us to tears, but music that's unfamiliar to us can awaken our souls and speak into zones where our worship has gone quiet. Our goals in the "New Music Malibu" workshop are to equip you with a wide variety of new music that you can take back home and share with your church family and to enjoy some mountaintop worship together in this beautiful chapel setting. We hope this time will be a feast for your soul!



Reimagining Church in a Changed World

JASON LOCKE AND TOD VOGT

In this Reimagining Church workshop, the panelists will look at how to move beyond the tired and futile hamster wheel of worship improvements, revolving preachers, rebrandings, facility improvements, and the like. Instead of just rethinking how to improve the weekly hour of worship, what if we as churches rethought how to do life together? What if Christian communities both new and old could imagine and live into a new future of being the church in the world? This session will look at concrete ideas for how to break out of existing frameworks.



Ministry That's Digital and Relational

DUDLEY CHANCEY, JOSH GRIFFIN, JEFF WALLING, AND OTHER GUESTS

In a world of ever-increasing and -invasive technology, which way should youth ministers turn? How can we reach teens who live in a digital world yet desperately seek authentic relationships? Sharing truth in imaginative ways has never been more important. Come hear some recent research and fresh ideas on how to leverage technology to give you more time to lean into relational ministry from experts and creative voices in the field of student ministry.





Unwind at Pepperdine

Crossfit - Wednesday-Friday, 6:30 AM

Strengthen your body and prep your mind in a fun and instructive setting with trainer Becca Brackett. No experience required, but base-level fitness suggested.

Space is limited. Waivers to be completed at the door.

FORM Meditation Movement - Thursday and Friday, 7 AM

The practice of FORM integrates physical movement with Scripture such as Psalm 23 and the beatitudes. Led by Kathryn Linehan, this session is about calming, centering, and strengthening the body to create greater agility and flow. Learn more with her new book, *Pearl Diving: Lessons Learned While Coming Up for Air*, and visit Studiolgnite.com.

Hike to the Cross

Pepperdine's self-guided, one-mile hiking trail begins at the top of Baxter Drive. With a climb of 830 feet within a half mile, it is considered a moderate to difficult hike. The trail closes at dusk, and hikers should remember to carry water at all times.

Massage Therapy - Wednesday-Friday, Noon-3 PM

Take a moment during the week to be pampered! Enjoy a free and rejuvenating, clothed 15-minute session with a certified massage therapist.

Sign-ups begin at 11:30 AM daily.

Morning Run - Wednesday, 6:30 AM

Join Harbor director Mike Cope for a beautiful early-morning run along Zuma Beach and Point Dume. Meet at the intersection of Pacific Coast Highway and Morning View Drive.

Therapeutic Tai Chi for Christ - Wednesday-Friday, 7 AM

Whether you are 8 or 88 years young, a prime athlete or with limited mobility, you can benefit from therapeutic tai chi and qigong! Start out the morning with Sifu Allen Wai Jang (assisted by Bob Perez) with exercises designed to awaken your mind, body, and spirit! Wear comfortable, loose clothing and come five minutes early for a brief introduction.

Pepperdine's pool and track will be available throughout the week.



Restoration History Track

Hosted by the Churches of Christ Heritage Center for Research on Churches of Christ and the Restoration Movement

Join **Jerry Rushford** to hear stories about the history of Churches of Christ.

WEDNESDAY, 1:20-1:45 PM

Remembering William M. Green

(June 26, 1897–October 21, 1979)

THURSDAY, 1:20-1:45 PM

Remembering Frank Pack

(March 27, 1916–December 9, 1998)



Visit the Heritage Center on the second floor of Payson Library.
Library hours during Harbor are 8 AM–6 PM.



Youth leaders from California at the 2022 Youth Ministry Retreat in Angeles Crest National Forest.



Mark Your Calendar

Spring Youth Ministry Network One-Day Gathering

March 20, 2023, Malibu, California

Fall Youth Ministry Retreat

October 8–9, 2023, Los Angeles, California

[Pepperdine.edu/YLI](https://pepperdine.edu/YLI)

 Pepperdine Youth Ministry Network

Youth Ministry in Our Ever-Changing Culture

The Youth Leadership Initiative offers a variety of programs and projects to help you renew your youth group by putting Jesus at the center of your ministry. Whether you are a full-time youth worker or a volunteer youth leader, we are here to help you raise up the next generation of young Christian leaders.

Youth Ministry Network Luncheon

Thursday, Noon, Hahn Fireside Room

HOST: JEFF WALLING

Christian Youth Leadership Experience

DEVELOPING YOUNG CHRISTIAN LEADERS SPIRITUALLY AND ACADEMICALLY

Nine life-transforming days at Pepperdine for rising high school juniors and seniors

July 21–29, 2023

All on-campus housing and meals: \$250

Apply before March 1, 2023

pepperdine.edu/crossways

 **CROSSWAYS**
PEPPERDINE UNIVERSITY

A portrait of Joella Michael, a woman with shoulder-length wavy grey hair, wearing black-rimmed glasses, a maroon blazer, and a colorful floral scarf. She is smiling and looking slightly to the right. The background is a blurred interior space with large, colorful stained-glass windows in shades of blue, yellow, and green. On the far left edge of the page, there are several thin, vertical, multi-colored lines in shades of blue, green, and yellow.

JOELLA MICHAEL

JANUARY 23, 1973–NOVEMBER 28, 2022

We remember with gratitude our dear friend and coworker **Joella Michael**, who died following an extended illness on November 28, 2022. Joella was a vital part of Pepperdine’s Church Relations team for 15 years, and was beloved by thousands of Harbor attendees who were blessed by her **joy** and **kindness**.

Remembering Joella and her time at Pepperdine, Rick Gibson, senior vice chancellor, shared, “Joella cared deeply about every detail, making certain that Harbor reflected Pepperdine’s high standards and exhibited the University’s commitment to hospitality. Above all else, she was motivated by her commitment to Christ. She worked tirelessly to make sure the program would encourage and equip all

participants and lead them into a deeper relationship with Jesus. She maintained this commitment while fighting her illness over the past five years. Her faith, courage, tenacity, and dignity were visible to each of us who worked alongside her as she fought an unimaginable disease while maintaining a strong work ethic. **Her fingerprints are all over Harbor.** Frankly, it is hard to imagine moving forward without her, but her example demands that we do so with joy and with confidence in the redemptive power of God through Christ.”

Joella’s greatest joy and treasure here on earth was her family. We continue to remember and pray over her husband, Jacob, and three daughters Ella, Kate, and Tess.

THE FOURSCORE YEARS PRESENCE OF PEPPERDINE BIBLE LECTURES HAS BEEN A BLESSING TO FAR MORE PEOPLE THAN WILL EVER BE KNOWN BY ANYONE OTHER THAN THE GOOD LORD.

..... We do, however, know that people have learned things of great importance, been inspired to do wonderful things, deepened their faith, formed lasting friendships, and the cause of Jesus Christ has benefited greatly. Our gratitude goes to those who have played leadership roles, taught classes, spoken at assemblies, led in song or prayer, served to welcome and host our guests, contributed financially to support the Lectures, and everyone who has attended because they love the Lord and their brothers and sisters.
.....

RONALD F. PHILLIPS

Senior Vice Chancellor and Caruso School of Law Dean Emeritus



THE ENDURING LOVE OF GOD

I AM LIKE A GREEN
OLIVE TREE
IN THE HOUSE OF GOD;
I TRUST IN THE
LOVINGKINDNESS
OF GOD FOREVER
AND EVER.

P S A L M 5 2 : 8

CELEBRATING THE 80TH
ANNIVERSARY OF THE PEPPERDINE BIBLE LECTURES

RICK AND AGNES GIBSON

Thank you, Pepperdine. We are grateful for Harbor and the many ways it has encouraged and equipped our fellowship for over 80 years.



Heritage 21 is a growing community of men and women, young and old, racially diverse, church leaders, preachers, teachers, church members, professors and scholars from across the theological spectrum within churches of Christ. We are responding to a call to support this fellowship as it travels down the path of change, challenge, decline and renewal.

Join the Heritage 21 Community in its quest to strengthen the churches of Christ in the United States and beyond.

www.heritage21.org



Thank you for the decades of gathering global friends and partners at Harbor Bible Lectures. What a blessing it has been to come together to share conversations focused on our great God and how we can serve his mission.

With gratitude,
The team at Mission Resource Network



MRNET.ORG



.....

In loving memory of
TRELLYS HENLEY
(1937–2022)

.....

For more than 30 years, Trellys and her husband Mike faithfully attended Harbor.

She and Mike looked forward to it every year and enjoyed seeing all their friends, as well as spending time with their fellow **Sonoma Avenue Church of Christ** members at the sessions.

They loved the fellowship, worship, and spiritual food—AND the PLP coffee and pie nights!

We love and miss you!

JIM AND JOLINE GASH AND FAMILY

.....

We are grateful for Pepperdine's continuing effort to find ways to come alongside and support the fellowship that gave it life. We celebrate the many years Harbor, the Pepperdine Bible Lectures, has strengthened Churches of Christ through worship experiences, Bible studies, workshops, and shared fellowship.

ANDY AND DEBBY BENTON

.....



.....

Thank you so much to all the speakers who for 80 years have shared their messages and lives with Harbor audiences. Your words have blessed, challenged, and encouraged us!

.....

**WHAT
REALLY
MATTERS**
MIKE COPE MINISTRIES

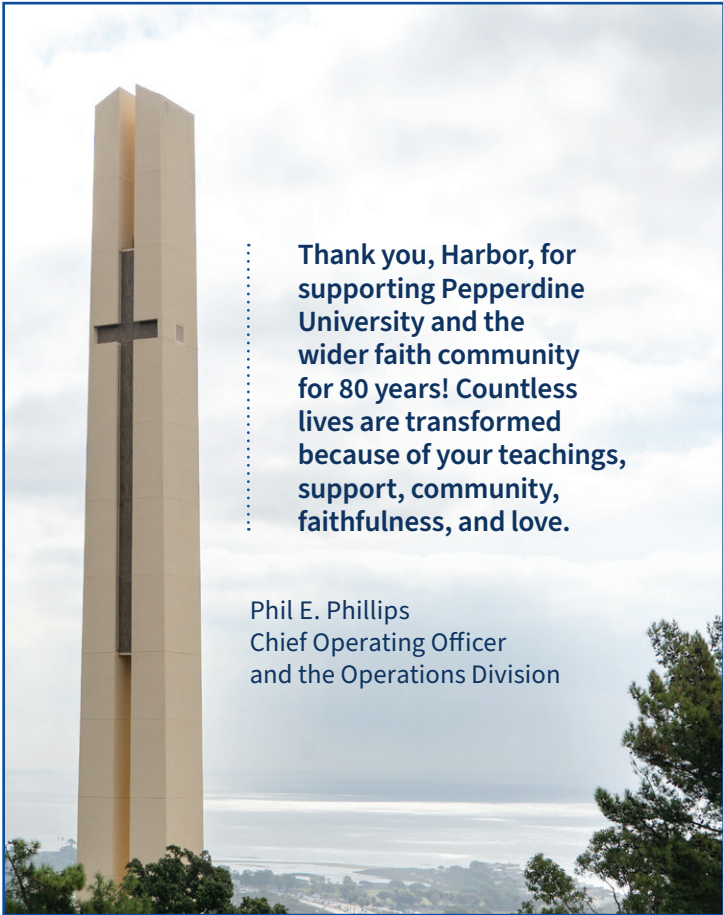


WE ARE CELEBRATING OUR 30TH ANNIVERSARY AS A CHURCH

Since our beginning in 1992 members have attended and enjoyed the Bible Lectures and many other special Pepperdine events.

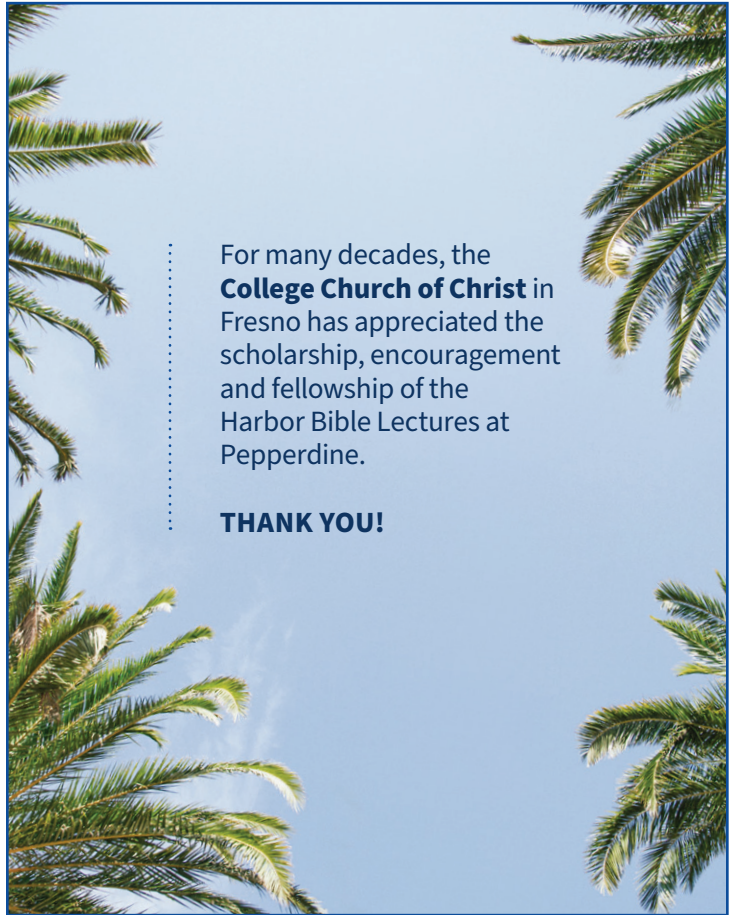
Thank you Jerry Rushford and Mike Cope and the Office of Church Relations for the decades of planning and preparation to bring our churches together in such a meaningful way.

INLAND VALLEY CHURCH OF CHRIST
Ontario, California



Thank you, Harbor, for supporting Pepperdine University and the wider faith community for 80 years! Countless lives are transformed because of your teachings, support, community, faithfulness, and love.

Phil E. Phillips
Chief Operating Officer
and the Operations Division



For many decades, the **College Church of Christ** in Fresno has appreciated the scholarship, encouragement and fellowship of the Harbor Bible Lectures at Pepperdine.

THANK YOU!



Thank you for the many years of service, support, and encouragement poured out to our churches and members through the annual gathering at **Pepperdine Bible Lectures and Harbor**. This has been a tremendous gift to all of us and we look forward to many years to come. We also appreciate the partnership Harbor has with Pepperdine Legacy Partners to host evening dessert and provide a space for people to gather in community and conversation.

 **PEPPERDINE
LEGACY PARTNERS**

I am convinced that neither death, nor life, nor angels, nor rulers, nor things present, nor things to come, nor powers, nor height, nor depth, nor anything else in all creation, will be able to separate us from the love of God in Jesus Christ our Lord.

After our move to L.A. in 1968 Harbor and previously the Bible Lectures became a mainstay in our lives with our membership at the Culver Palms Church of Christ. I imagine that Frank and Della Pack invited us to the lectures. I remember learning how to teach Cradle Roll as a Bible class to babies in my young years at Bible Lectures. I am eternally grateful to Mike Cope, Rick Gibson, Jerry Rushford, Joella Michael, and a host of others who have prepared heartfelt and stirring sermons and classes with lessons that as Frank Pack would like to say would help prepare us to be “little Christs” to our hurting world. We owe you a debt of gratitude. Your ministry to the Church of Christ is invaluable.

To God be the glory for Harbor for this 80th anniversary year and forevermore,

SHEILA AND TOM BOST





Thanks for all the great memories. We are looking forward to being back in Malibu again next year!

.....
BAMMEL CHURCH OF CHRIST



Next Gen Preacher Search
Ambassadors 2022

.....
The Pepperdine Youth Leadership Initiative congratulates HARBOR on 80 years of blessing the church and passing the baton of faith to the next generation!

JEFF WALLING AND RACHEL HIGGINS
.....

PEPPERDINE | Youth Leadership Initiative

Harbor Speakers



Leonard Allen
Nashville, Tennessee



Greg Anderson
Bryan, Texas



David Ayres
Houston, Texas



Cliff Barbarick
Abilene, Texas



Jovan Barrington
Highlands Ranch, Colorado



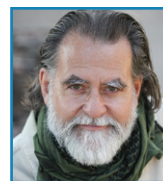
Falon Barton
Malibu, California



John Barton
Malibu, California



Sara Barton
Malibu, California



Richard Beck
Abilene, Texas



David Berry
Visalia, California



Pat Bills
Dallas, Texas



Phil Brookman
Edmond, Oklahoma



K. Rex Butts
Newark, Delaware



Joi Carr
Malibu, California



Michael Chaffin
Mesa, Arizona



Dudley Chancey
Edmond, Oklahoma



Ron Clark
Portland, Oregon



Shane Coffman
Owasso, Oklahoma



La Shonda Coleman
Castaic, California



Monte Cox
Searcy, Arkansas



Doug Crum
Hobbs, New Mexico



Billy Curl
Los Angeles, California



Tiffany Dahلمان
Hope Mills, North Carolina



Dyron Daugherty
Malibu, California



Kindy De Long
Malibu, California



Chais DiMaggio
Burlington, Massachusetts



Drew Dixon
Auburn, Washington



Jeanette Duval
El Paso, Texas



Matt Elliott
Colorado Springs, Colorado



Byron Fike
Houston, Texas

SPEAKERS CONTINUED



Thomas Fitzpatrick
Las Cruces, New Mexico



Katrina Gallardo
Calabasas, California



Susan Giboney
Thousand Oaks, California



Rick Gibson
Agoura Hills, California



Randy Gill
Nashville, Tennessee



Bob Goff
San Diego, California



Chris Goldman
Lynnwood, Washington



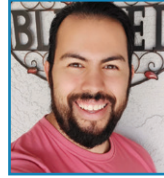
Joshua Graves
Nolensville, Tennessee



Josh Griffin
Irvine, California



Caleb Grimes
Marana, Arizona



Jonathan Guevara
Houston, Texas



Lauren Haberstock
Malibu, California



Kelly Haer
Santa Monica, California



Sharon Hargrave
Sedona, Arizona



Lance Havens
Hobbs, New Mexico



Chris Heard
Moorpark, California



Amy Bost Henegar
Long Beach, California



Orpheus Heyward
Atlanta, Georgia



John Mark Hicks
Nashville, Tennessee



Wade Hodges
Lucas, Texas



Shane Hughes
Abilene, Texas



Mac Ice
Abilene, Texas



Karl Ihfe
Lubbock, Texas



Sara Young Jackson
Malibu, California



Allen Wai Jang
San Gabriel, California



Daniel Jarchow
Seattle, Washington



Kent Jobe
Searcy, Arkansas



Bethany Jones
West Hills, California



Stacy Jones
Victorville, California



Grady King
Irving, Texas



Charles Kiser
Dallas, Texas



Jessica Knapp
Tucson, Arizona



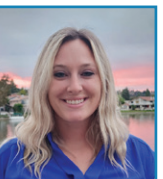
Rick Krug
Fountain Hills, Arizona



Kim Lambert
North Richland Hills, Texas



Scott Lambert
North Richland Hills, Texas



Dori Lansbach
Malibu, California



Jason Locke
Fresno, California



Jessica Lowry
San Antonio, Texas



Zac Luben
West Hills, California



Mark Manassee
Culver City, California



Rick Marrs
Moorpark, California



Jim Martin
Memphis, Tennessee



Gregg Marutzky
Palmdale, California



Dee Dee Mayer
Thousand Oaks, California



Esau McCauley
Wheaton, Illinois



Phil McKinney
Fairfax, Virginia



Don McLaughlin
Atlanta, Georgia



Alexander Melirrytos
Athens, Greece



Eleni Melirrytou
Athens, Greece



Steven Moore
Abilene, Texas



Bryan Moss
Fort Worth, Texas



Larry Mudd
Oshkosh, Wisconsin



Cari Myers
Woodland Hills, California



Candace Nicolds
Brookline, Massachusetts



Luke Norsworthy
Cedar Park, Texas



Marian Parker
San Jose, California



Tim Parker
San Jose, California



Jacob Parnell
Livermore, California



Brock Paulk
Fort Worth, Texas



Liz Perez
Santa Paula, California



Robert Perez
Santa Paula, California



Doug Peters
Montgomery, Texas



Mary Poplin
Wichita Falls, Texas



Danny Quintero
Chino, California



Mary Alice Reed
Chino, California



Jarrod Robinson
Abilene, Texas



Josh Ross
Memphis, Tennessee



Dusty Rush
Lawrenceville, Georgia



Jerry Rushford
Oak Park, California



Cheryl Russell
McKinney, Texas



Kyle Sapp
Fair Oaks, California



Bryan Schackmann
Burbank, California



Chris Seidman
Coppell, Texas



Rubel Shelly
Spring Hill, Tennessee



Ryan Smith
Maumelle, Arkansas



Tim Spivey
Escondido, California



Judy Square
San Leandro, California



Woody Square
San Leandro, California



Suzanne Stabile
Dallas, Texas



Bradley Steele
Abilene, Texas



Jonathan Stormont
Little Rock, Arkansas



Stanley Talbert
Los Angeles, California



Darryl Tippens
Abilene, Texas



Bryn Valencia
Redding, California



Bobby Valentine
Antioch, California



Tod Vogt
McKinney, Texas



Andy Wall
Thousand Oaks, California



Jeff Walling
Malibu, California



Taylor Walling
North Richland Hills, Texas



Addison Weaver
Haltom City, Texas



Chalé Wesson
Fresno, California



Lauren White
Nashville, Tennessee



Brendin Williamson
Tucson, Arizona



Jack Williamson
Thousand Oaks, California



Dewayne Winrow
Granada Hills, California



Kevin Withem
Escondido, California



Mallory Wyckoff
Largo, Florida



Nick Zola
Oak Park, California

Stay With Us

Four types of housing are available for Harbor attendees who prefer to stay on campus. Floor plans and more details for each location are online at pepperdine.edu/harbor.

Housing rates are per person.



Check-In: Tuesday, May 2, 3-7 PM

Late check-in through Lecture Central on the main campus

Checkout: Saturday, May 6, 7-10 AM

Early checkout through Lecture Central

NOTE: As with typical student housing, bed linens, bath towels, microwaves, clothing hangers, coffeemakers, and dishes are not provided. The rooms are not air conditioned, but the evenings can be cool and the Pacific breezes are usually sufficient for comfort.

- Complimentary shuttle service is available throughout the campus.
- The Pepperdine pool, track, and other athletic facilities are available for use with your Harbor name badge.

Residence Halls

- **\$200 registration for one bed**
- Tuesday–Saturday
- Each suite includes four bedrooms (with two beds each), a shared living room, and bathroom (two sinks, two toilets, two showers)
- Unloading at hall during check-in permitted; cars must then be moved to outer streets and lots

Lovernich Apartments

- **\$250 registration for one bed**
- Tuesday–Saturday
- Each apartment includes two bedrooms (with two beds each), a shared living room, bathroom with shower, and kitchen (oven, stove, fridge)
- Parking lot

George Page Apartments

- **\$250 registration for one bed**
- Tuesday–Saturday
- Each apartment includes two bedrooms (with two beds each), a shared living room, bathroom with shower, and kitchen (oven, stove, fridge)
- Parking lot

Drescher Apartments

- **\$250 registration for one room, which includes one extra-long twin bed**
- Tuesday–Saturday
- Each apartment includes four bedrooms, a shared living room, bathroom with shower, and kitchen (oven, stove, fridge)
- Fitness room
- Parking garage

RV Parking

Due to construction on campus, RV parking is not available. However, Malibu Beach RV Park is only two miles from campus and reservations can be made at maliburv.com. Registration to attend Harbor is not included and can be made separately at pepperdine.edu/harbor.

Linens

All rooms have extra-long twin beds. Guests may choose to bring their own bedding and towels or borrow from Pepperdine for the event at no charge. Linens may be ordered during registration, picked up with keys, and must be returned upon checkout.

EACH LINEN SET INCLUDES:

- 2 flat extra-long twin sheets (no fitted sheets)
- 1 twin fleece blanket
- 1 pillow and pillow case
- 2 bath towels
- 1 hand towel
- 1 face cloth

Accessibility Needs

Malibu's sloped terrain can be difficult to maneuver, and we are committed to providing a comfortable experience for all of our guests. Designated accessible parking is available throughout campus for guests with state-issued placards. Transit Services also provides shuttle transportation equipped with a mobility device lift and tie-downs upon request.

The information below may help determine the type of housing for your accessibility needs. **For specific questions, please call our office at 310.506.4270.**

RESIDENCE HALLS: ground floor standard, non-accessibility rooms, step-in showers; rooms not maneuverable for wheelchairs

LOVERNICH APARTMENTS: accessible parking, accessible rooms have wider hallways, railings in bathrooms, and step-in showers; limited wheel-in showers

GEORGE PAGE APARTMENTS: accessible parking, accessible rooms have wider hallways, railings in bathrooms, and step-in showers; limited wheel-in showers

DRESCHER APARTMENTS: accessible parking structure, accessible rooms have wider hallways, railings in bathrooms, and step-in bathtubs; limited wheel-in showers

General Information



Dates to Know

JANUARY 24, 2023

Registration opens

APRIL 17, 2023

Online registration closes (walk-ins welcome during the event)

APRIL 17, 2023

Last day to cancel for a full refund

Making Waves Children's Program

The Harbor Making Waves Vacation Bible School program is available for children ages 3 to 11.

Laureen Henegar, a retired school district nurse and Vacation Bible School coordinator extraordinaire, directs the program, assisted by trained and paid Pepperdine students. Your child's health and safety are important to us, and this program will adjust to Los Angeles County Department of Public Health guidelines as needed. The program offers:

3 MORNING SESSIONS

Wednesday-Friday, 8:30 AM-12:30 PM

3 EVENING SESSIONS

Tuesday-Thursday, 6:30 PM-9 PM

\$10 PER CHILD, PER SESSION

(that's 19 hours of child care at \$3 per hour!)

At the end of the Harbor registration process for your children, select the total number of Making Waves tickets needed, whether for one session, one day, or all three days. Use of the tickets is not designated, so they may be used for any day, time, or child. Every time you drop off your child(ren), you will turn in one ticket per child.

Meal Tickets

A 10-meal card—for yourself or to share—may be purchased during registration, or you may opt to pay as you go at Waves Cafe. For pricing and details, visit pepperdine.edu/harbor.

Waves Cafe

Breakfast, lunch, and dinner are served Wednesday morning to Saturday morning

Fees

(Youth are 18 and younger)

REGISTRATION

Adult registration	\$50
Adult one-day pass	\$30
Youth registration	\$10
Youth one-day pass	\$5
Pepperdine faculty/staff	Free

HOUSING

Residence Hall	\$200 per bed
Lovernich Apartments	\$250 per bed
George Page Apartments	\$250 per bed
Drescher Apartments	\$250 per room (1 bed)

Housing fees cover the total of all four nights, regardless of the number of nights stayed, and are not prorated.

Pet Policy

Service animals are permitted in all areas of campus. Pets are limited to outdoor areas only and must be on a leash.

Contact Information

OFFICE OF CHURCH RELATIONS

church.relations@pepperdine.edu

310.506.4270

pepperdine.edu/harbor



@harborpbl

#harbor2023

Schedule Overview

TUESDAY

- 3-7 PM On-Campus Housing Check-In
- 5-6:30 PM Dinner
- 6:30-9 PM Evening Children's Program
- 6:30-7 PM Evening Worship
- 7-8:15 PM Evening Keynote
- 9-10 PM Evening Programs

WEDNESDAY-THURSDAY

- 6:30-8 AM Breakfast
- 7-7:45 AM Morning Worship
- 8-8:45 AM Session 1
- 8:30 AM-12:30 PM Morning Children's Program
- 9-9:45 AM Session 2
- 10-10:45 AM Session 3
- 11 AM-Noon Morning Keynote
- Noon-1:30 PM Lunch
- 2-4:15 PM Afternoon Workshops
- 5-6:30 PM Dinner
- 6:30-9 PM Evening Children's Program
- 6:30-7 PM Evening Worship
- 7-8:15 PM Evening Keynote
- 9-10 PM Evening Programs

FRIDAY

- 6:30-8 AM Breakfast
- 7-7:45 AM Morning Devotional
- 8:30 AM-12:30 PM Morning Children's Program
- 8 AM-Noon Morning Keynotes and Worship
- Noon-1:30 PM Lunch
- Noon-2 PM Friday Checkout
- 5-6:30 PM Dinner

SATURDAY

- 6:30-9 AM Breakfast
- 7-10 AM Morning On-Campus Housing Checkout

Receptions and Meal Programs

ABILENE CHRISTIAN UNIVERSITY

Thursday, 8:30-10 PM
Heritage Hall Trophy Room

CAMPUS MINISTRIES

Thursday, Noon-1:30 PM
Beaman Patio

EXECUTIVE MINISTERS AND NONPROFIT LEADERS

Tuesday, 8:30-10 PM
Faculty Dining Room

HARDING SCHOOL OF THEOLOGY

Wednesday, Noon-1:30 PM
Faculty Dining Room

HARDING UNIVERSITY ALUMNI

Thursday, 8:30-10 PM
Hahn Fireside Room

HERITAGE 21 FOUNDATION

Wednesday, 5-6:30 PM
Hahn Fireside Room

KAIROS CHURCH PLANTING

Tuesday, 5-6:30 PM
Hahn Fireside Room

KIBO GROUP

Wednesday, 5-6:30 PM
Faculty Dining Room

LET'S START TALKING

Thursday, 6:30-8 AM
Hahn Fireside Room

LIPSCOMB UNIVERSITY

Wednesday, 8:30-10 PM
Hahn Fireside Room

MISSION RESOURCE NETWORK

Thursday, Noon-1:30 PM
Faculty Dining Room

OKLAHOMA CHRISTIAN UNIVERSITY

Wednesday, 8:30-10 PM
Heritage Hall Trophy Room

PEPPERDINE ALUMNI

Tuesday, 8:30-10 PM
Juarez Courtyard (outside
Weisman Museum of Art)

PEPPERDINE LEGACY PARTNERS

Thursday, 5-6:30 PM
Hahn Fireside Room

PEPPERDINE RELIGION ALUMNI

Wednesday, 6:30-8 AM
Beaman Patio

PRESIDENT'S SPEAKER RECEPTION

Wednesday, 8:30-10 PM
Brock House

ROCHESTER UNIVERSITY

Thursday, 5-6:30 PM
Faculty Dining Room

WOMEN IN MINISTRY AND FRIENDS

Wednesday, Noon-1:30 PM
Hahn Fireside Room

YORK COLLEGE

Thursday, 8:30-10 PM
Faculty Dining Room

YOUTH MINISTRY NETWORK

Thursday, Noon-1:30 PM
Hahn Fireside Room



LEGEND

- AC Appleby Center
- AG Amphitheatre Grill
- BEA Beaman Patio
- BPC Black Family Plaza Classrooms
- DPS Dept. of Public Safety
- EA Elkins Auditorium
- FDR Faculty Dining Room
- FF Firestone Fieldhouse
- FC Fitness Center
- HFR Hahn Fireside Room
- HC Health Center
- HG Heroes Garden
- HH Heritage Hall
- HTC Hike to the Cross
- HWC Howard A. White Center
- LH Light House
- LT Lindhurst Theatre
- PLC Pendleton Learning Center
- PL Payson Library
- R Raitt Recital Hall
- SC Stauffer Chapel
- ST Smothers Theatre
- TAC Thornton Administrative Center
- WC Waves Cafe
- W Weisman Museum of Art
- ★ Lecture Central/Guest Services
- 🚌 Shuttle and Van Stops
- 🚗 Van Stops

Guest parking is available in the gray areas and visitors may park in any legal parking space on campus.

PEPPERDINE UNIVERSITY

Office of Church Relations
24255 Pacific Coast Highway
Malibu, California 90263-4270

Nonprofit Org.
U.S. Postage
PAID
Pepperdine
University

May 2-5, 2023

Registration opens January 24

pepperdine.edu/harbor



.....

For I am convinced that neither death nor life, neither angels nor demons, neither the present nor the future, nor any powers, neither height nor depth, nor anything else in all creation, will be able to separate us from the love of God that is in Christ Jesus our Lord.

ROMANS 8:38-39

PEPPERDINE
UNIVERSITY